



kelvingrove  
primary and  
nursery  
school

A primary and nursery school for children aged 3-11, with an autistic unit and children's centre. Aiming for excellence in the education and development of children from the Forest Hill and Sydenham areas.

# Year 3 Curriculum Meeting Tuesday 12<sup>th</sup> September 2023

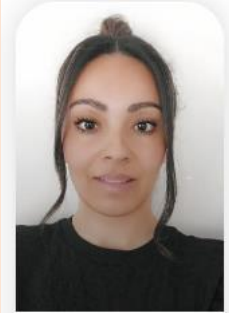
Miss Whyte, Mrs Heron Njie and Miss Shardlow



kelvingrove  
primary and  
nursery  
school

A primary and nursery school for children aged 3-11, with an autistic unit and children's centre. Aiming for excellence in the education and development of children from the Forest Hill and Sydenham areas.

Miss Hussein



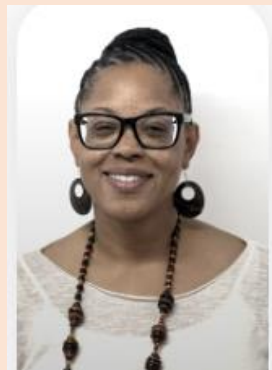
Miss Whyte



Mrs Sanusi



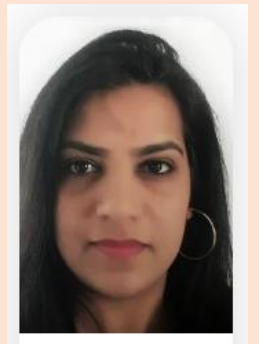
Mrs Heron-Njie



Miss Shardlow



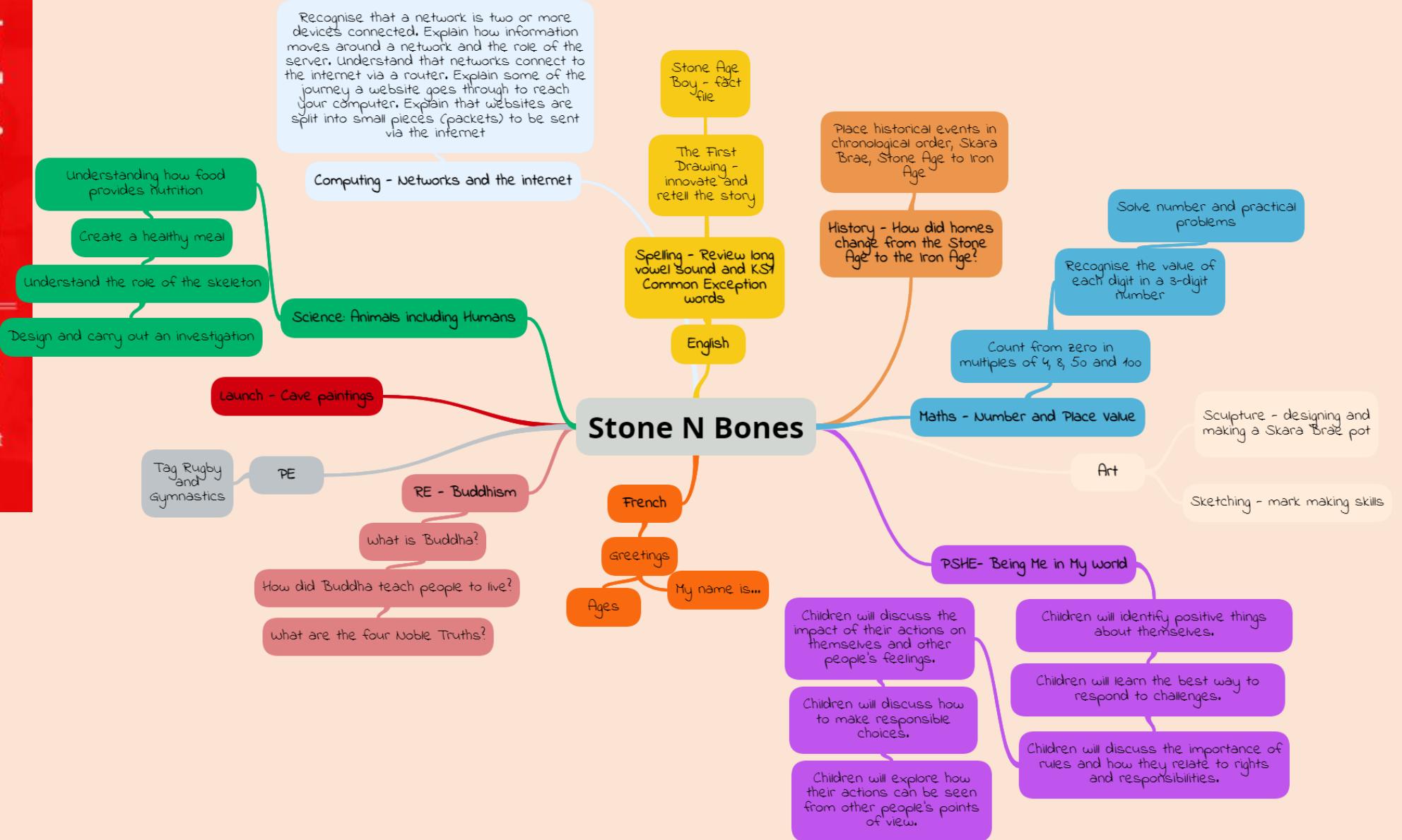
Mrs Khan





# Topics throughout the year

Autumn 1	Autumn 2	Spring 1	Spring 2	Summer 1	Summer 2
Stones N Bones (History)	Lights, Camera, Action  (Science)	Quakes and Shakes  (Geography)	Groovy Greeks  (History)	Getting to the Root Of It  (Science)	Windrush  (History/Geography)





KEATING GROVE  
 primary and  
 nursery school

### Year 3 Timetable Jade Week 3 (Non-PPA) Week A







	8:30 - 8:40	8:45 - 9:00	9.00am – 9.40 am	9.40am – 10.40am	10:40 10:55	10.40am – 12.00pm		12:00 – 12.50	12:50pm – 3:00pm			3:00	3:15
Monday	<b>ARRIVAL / EARLY WORK</b>	<b>REGISTRATION / HAND WASHING</b>	Assembly 9.10am – 9.30am	Launch (English)	<b>PLAYTIME IN MAIN PLAYGROUND SNACK</b>	Launch (Maths)	<b>HAND WASHING</b>	<b>LUNCH: 12:20-12:50 (MAIN PLAYGROUND)</b>	Whole Class Reading 1.00pm – 1.40pm	HW 1.40 – 1.50	Jigsaw PSHE	<b>STORYTIME / HANDWASHING</b>	<b>HOMETIME</b>
Tuesday			Whole Class Reading	English		Maths			PE	Spelling	Maths Fluency /Computing		
Wednesday			Whole Class Reading	English		Maths			HW	Spelling 1.35 – 1.55	Science		
Thursday			Maths	Music Assembly 10am – 10.30am		English			Guided Reading 1.00pm – 1.40pm	Spelling 1.40 – 2.00	History		
Friday			Whole Class Reading	English		Maths			HW/ Spelling 1.00 – 1.30	Topic/Art	Spelling Test/ High Fliers 2:45pm – 3:00pm		

A primary and nursery school for children aged 3-11, with an autistic unit and children's centre. Aiming for excellence in the education and development of children from the Forest Hill and Sydenham areas.

# Reading

- Whole Class Reading
- Reading in English
- Reading records – to record home reading, at least 4 times a week
- Additional reading support within school if needed
- Visiting the school library
- Reading Challenge
- Star Reader of the Week

# Reading Record

Date, book and page number	Comments Give a score out of 10 to show how much you enjoyed your reading		
			
			
			
			
			
			
Tricky words, or new words I have learned			



kelvingrove  
primary and  
nursery  
school

A primary and nursery school for children aged 3-11, with an autistic unit and children's centre. Aiming for excellence in the education and development of children from the Forest Hill and Sydenham areas.

# Year 3 and 4 Statutory spelling words

**\*\* Year 3 and 4 Word List \*\***

Use this list for *ideas* and to *check* your spelling!

accident	century	experiment	interest	particular	remember
accidentally	certain	extreme	island	peculiar	sentence
actual	circle	famous	knowledge	perhaps	separate
actually	complete	favourite	learn	popular	special
address	consider	February	length	position	straight
answer	continue	forward(s)	library	possess	strange
appear	decide	fruit	material	possession	strength
arrive	describe	grammar	medicine	possible	suppose
believe	different	group	mention	potatoes	surprise
bicycle	difficult	guard	minute	pressure	therefore
breath	disappear	guide	natural	probably	though
breathe	early	heard	naughty	promise	(although)
build	earth	heart	notice	purpose	thought
busy	eight	height	occasion	quarter	through
business	eighth	history	occasionally	question	various
calendar	enough	imagine	often	recent	weight
caught	exercise	increase	opposite	regular	woman
centre	experience	important	ordinary	reign	women

**Autumn term**

Number

**Place value**  
FREE TRIAL

[VIEW](#)

Number

**Addition and subtraction**

[VIEW](#)

Number

**Multiplication and division A**

[VIEW](#)

**Spring term**

Number

**Multiplication and division B**

[VIEW](#)

Measurement

**Length and perimeter**

[VIEW](#)

Number

**Fractions A**

[VIEW](#)

Measurement

**Mass and capacity**

[VIEW](#)

**Summer term**

Number

**Fractions B**

[VIEW](#)

Measurement

**Money**

[VIEW](#)

Measurement

**Time**

[VIEW](#)

Geometry

**Shape**

[VIEW](#)

**Statistics**

[VIEW](#)

**Consolidation**

# Year 3 Home Learning

A screenshot of the "Hit the Button" game interface. At the top, it displays the equation  $3 \times 3$  in large yellow numbers. Below this is a 3x4 grid of yellow circular buttons with numbers: 2, 9, 10, 12 in the first row; 27, 28, 32, 44 in the second row; and 50, 64, 110, 132 in the third row. The buttons are connected by a grid of silver lines. On the right side, there are two circular buttons, one green and one red. At the bottom, a dark blue bar contains the text "Times Tables up to 12", "Hit the Answer - Mixed Tables", "Timer: 0:58", "Score: 0/0", and the "Topmarks" logo.

<https://www.topmarks.co.uk/maths-games/hit-the-button>



[Times Tables Rock Stars – Times Tables Rock Stars \(trockstars.com\)](https://www.trockstars.com)

# Maths Fluency

## Autumn Term

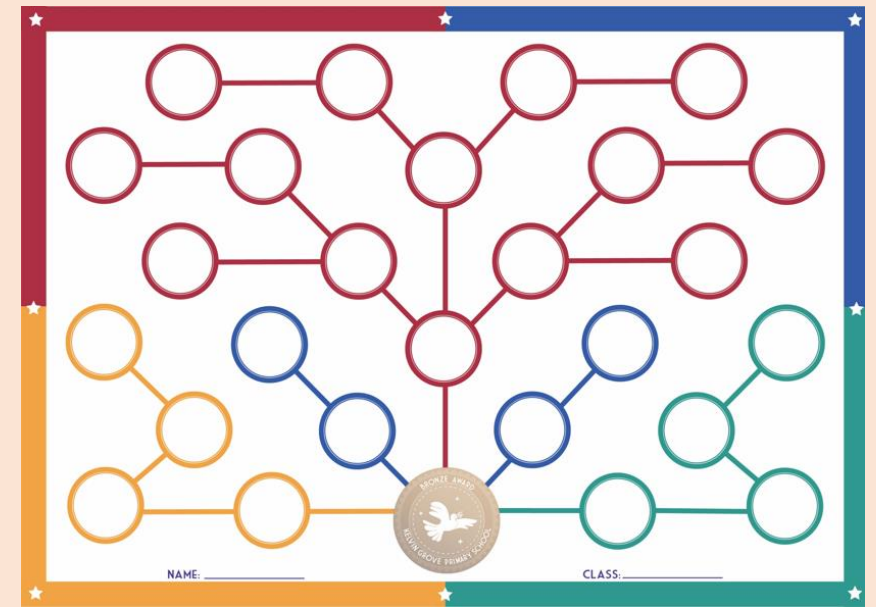
- Add and subtract to/from 1000 using units of 100s, 10s and 1s
- Count forwards and backwards across in 100s, 10s and 1s across boundaries (within 1,000).
- Count forwards and backwards in 25s and 50s
- Recap times tables learned in year 2 (2, 5 & 10x tables)
- Number bonds to 10 and 20

## Spring & Summer Term

- Times tables: 3, 4 and 8x tables

# Expectations

- Attendance & Punctuality
- Kelvin Grove Core Values
- ✓ Compassion
- ✓ Building Community
- ✓ Self Improvement
- ✓ Health & Wellbeing



Our token system



Compassion



Self Improvement



Building Community



Health and Wellbeing



kelvingrove  
primary and  
nursery  
school

A primary and nursery school for children aged 3-11, with an autistic unit and children's centre. Aiming for excellence in the education and development of children from the Forest Hill and Sydenham areas.

## Support at home

- Reading
- Encourage independence
- Self-organisation
- PE kit - Tuesday
- Times tables / spellings / home learning projects



kelvingrove  
primary and  
nursery  
school

## Homework

- Reading
- Mathematics and TTRS
- Spelling
- Times tables (2x, 10x, 5x, 3x, 4x and 8x)
- Home learning projects

A primary and nursery school for children aged 3-11, with an autistic unit and children's centre. Aiming for excellence in the education and development of children from the Forest Hill and Sydenham areas.

# Home School Agreement



## Kelvin Grove Primary School - Home School Agreement

As members of the Kelvin Grove School community, we will work together to ensure that all children are happy, safe, supported and able to learn and achieve their potential.

	<b>As a school, we will:</b>	<b>As parents/carers, we will:</b>	<b>As a pupil, I will:</b>
<b>Safety</b> <i>(including e-safety)</i>	<ul style="list-style-type: none"> <li>Actively ensure that all children are kept safe at all times.</li> <li>Ensure that all staff working in school receive regular safeguarding training and understand the school's safeguarding procedures.</li> <li>Ensure that all visitors to school are aware of and adhere to the school's safeguarding policy.</li> <li>Involve external agencies where necessary to safeguard children's wellbeing.</li> <li>Educate all children in an age-appropriate way about how to stay safe online.</li> </ul>	<ul style="list-style-type: none"> <li>Teach our child how to be safe online.</li> <li>Monitor our child's usage and activity on the internet.</li> <li>Teach our child how to use their mobile phone responsibly if we choose to give them one.</li> <li>Prevent our child from accessing social media or software that it is not appropriate for their age.</li> </ul>	<ul style="list-style-type: none"> <li>Use the internet safely and responsibly.</li> <li>Behave in an appropriate way online – this includes how I use my mobile phone if I have one.</li> <li>Report any concerns I have about online activity (including activities on mobile phones) to my parents or an adult at school.</li> </ul>
<b>Health</b>	<ul style="list-style-type: none"> <li>Ensure that children's emotional and mental well-being are monitored closely and prioritised.</li> <li>Maximise all opportunities for outdoor play and learning.</li> <li>Provide weekly, high quality physical education lessons for all children.</li> <li>Provide high quality extra-curricular sports clubs that children of all ages can participate in.</li> <li>Provide healthy school meals for all children – including providing a daily fruit or vegetable snack for younger children.</li> </ul>	<ul style="list-style-type: none"> <li>Talk to our child about their mental health and well-being and teach them how to recognise the range of emotions they might experience.</li> <li>Provide our child with a healthy packed lunch and snack.</li> <li>Encourage our child to keep active in their free time and educate them on the importance of keeping active and eating healthily.</li> <li>Walk to school if possible or use public transport. If using a car is necessary, we will park a reasonable distance away from the school to give our child the opportunity to walk part of their journey to school.</li> </ul>	<ul style="list-style-type: none"> <li>Try and express how I feel in an appropriate way and ask for help to manage my feelings if I need it.</li> <li>Keep active.</li> <li>Make healthy choices about the food I eat.</li> <li>Participate in extra-curricular sports activities either at school or outside of school if I can.</li> <li>Walk to school if possible or use public transport. Encourage my parents to park further away from school if we drive so that I can walk part of my journey to school.</li> </ul>
<b>Learning</b> <i>(including home learning)</i>	<ul style="list-style-type: none"> <li>Provide a curriculum that is broad, balanced, diverse and enriching.</li> <li>Teach high quality lessons to children that provide the appropriate level of challenge and enables them to make progress.</li> <li>Provide interesting and enriching home learning activities that support and extend the curriculum.</li> <li>Keep parents and carers appropriately informed at regular intervals throughout the school year about their child's learning and progress.</li> </ul>	<ul style="list-style-type: none"> <li>Engage with what our child is learning at school.</li> <li>Encourage our child to give their best to their learning.</li> <li>Support our child's learning at home by reading with them daily, helping them to develop an understanding of number and learn their times tables.</li> <li>Support our child to complete their home learning and assist them with projects they may be given.</li> <li>Attend parents' evenings so that we can stay informed about our child's learning and progress.</li> </ul>	<ul style="list-style-type: none"> <li>Try my best in each lesson and have a positive attitude towards my learning.</li> <li>Be a curious learner and ask appropriate questions so that I can understand more.</li> <li>Make thoughtful and relevant contributions in lessons so that others in my class can learn more.</li> <li>Be resilient when I find areas of my learning difficult.</li> <li>Take pride in the way I present my learning.</li> </ul>

# Communication

- Any information from us will be sent via text – either the complete message or a link.
- It is essential that the school have your correct mobile number.
- Also, please make sure you read these messages.
- Any emails can be sent to:
- [admin@kelvingrove.lewisham.sch.uk](mailto:admin@kelvingrove.lewisham.sch.uk)
- [Year3@kelvingrove.lewisham.sch.uk](mailto:Year3@kelvingrove.lewisham.sch.uk)

Parents' Evenings will be held on Tuesday 17<sup>th</sup> and Wednesday 18<sup>th</sup> October 2023. Please book your appointment time when you receive the text about it.